

SPADINA-FRONT STATION

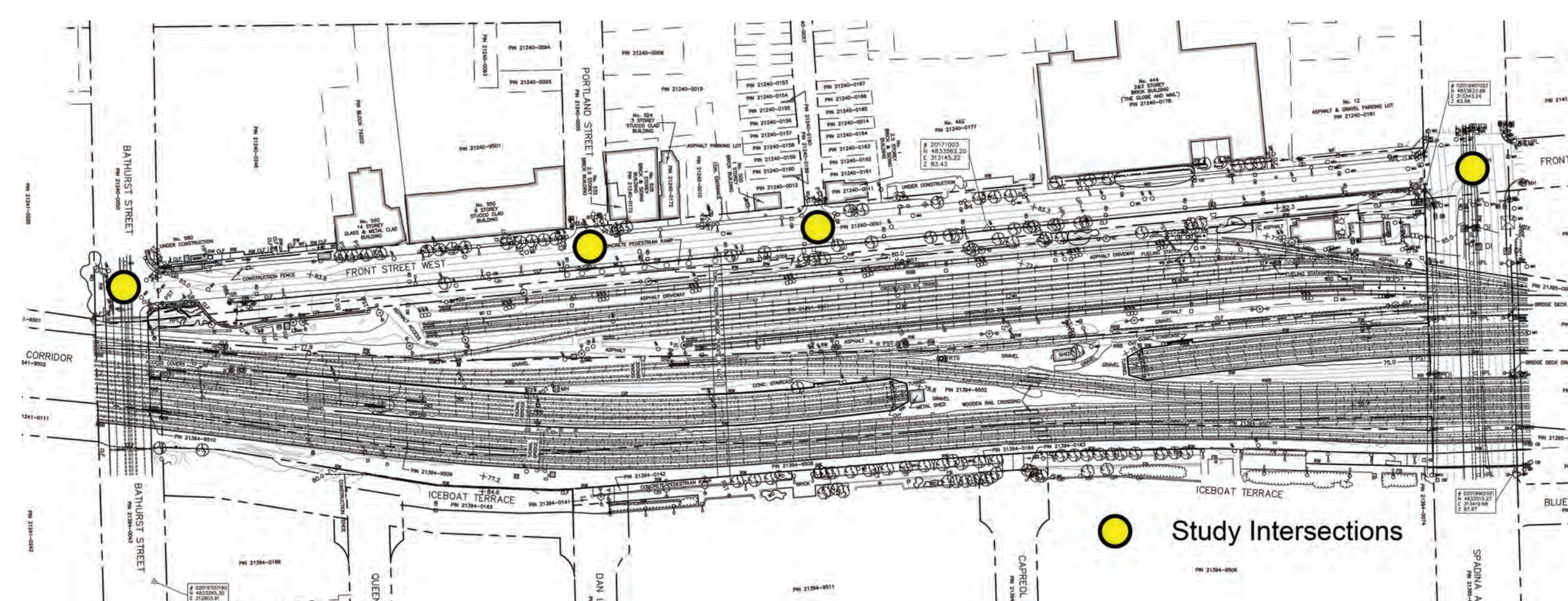
Highlights of Environmental Studies

TRANSPORTATION

Station access is focused on transit riders, pedestrians and cyclists:

- Direct streetcar connections, multiple pedestrian access points, and connections to cycling facilities.

Limited traffic impacts are anticipated.



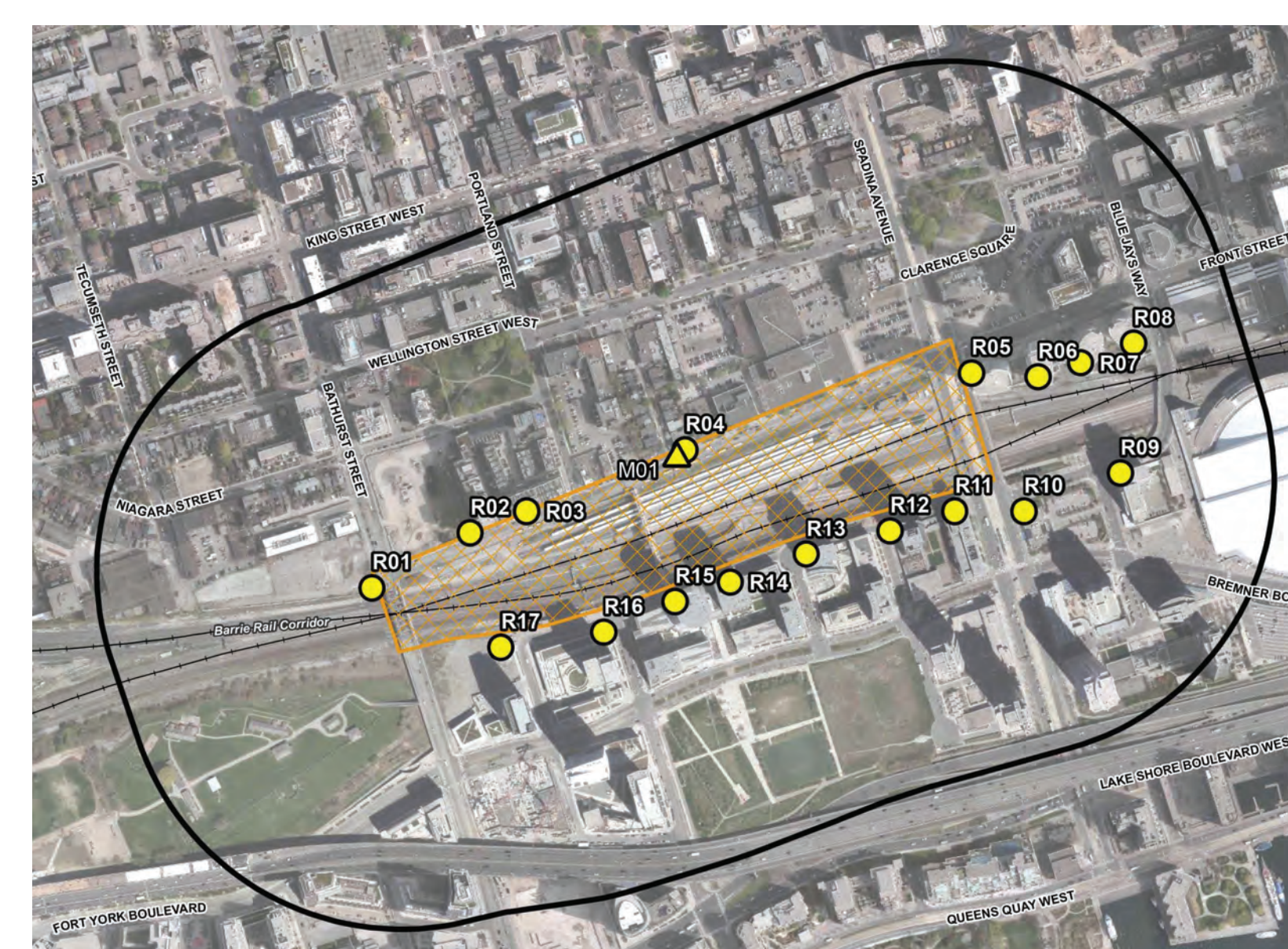
NOISE AND VIBRATION

Potential Effects

- Nighttime construction sound levels may exceed Federal Transit Administration (FTA) criterion at nearby residences.
- Presence of station is not expected to affect sound levels (assessment is underway).
- No anticipated vibration effects.

Mitigation Measures

- A Noise and Vibration Control Plan will be developed prior to construction
- A more detailed assessment of potential noise and vibration impacts will be developed as part of detailed design
- Construction to be planned to minimize the number of nights where noisy nighttime construction activities may be required
- Keep construction equipment in good repair.



AIR QUALITY

Concentrations of selected contaminants predicted to be below target levels (provincial and federal) at nearby residences.

Potential Effects

- Emissions from engines of construction equipment, dust emissions from stockpiles, loading/unloading activities and transportation of soils during construction
- Emissions from a limited number of cars (informal pick-up/drop-off) during operation.

Mitigation Measures

- An Air Quality Management Plan will be developed and implemented to address items such as use of dust suppressant measures during construction (e.g., covering dump trucks, minimizing loading/unloading of soils and washing of construction equipment and vehicles)
- A more detailed assessment of potential air quality impacts will be developed as part of detailed design.