

LAWRENCE-KENNEDY STATION

Highlights of Environmental Studies

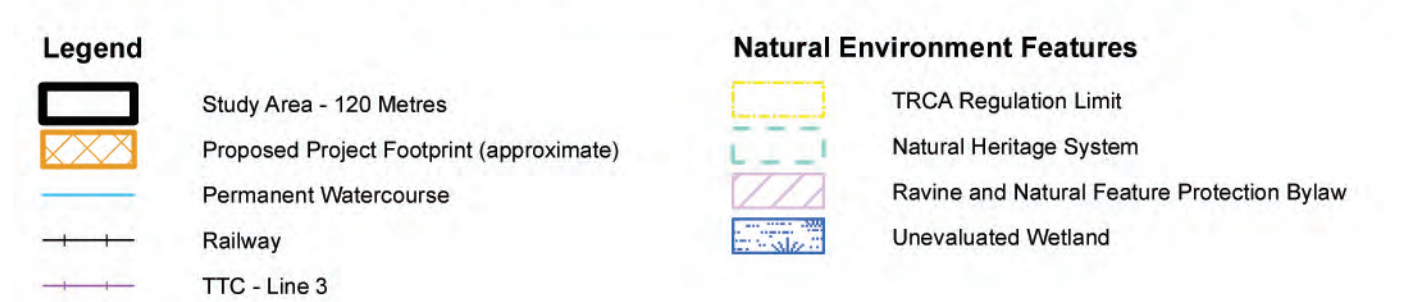
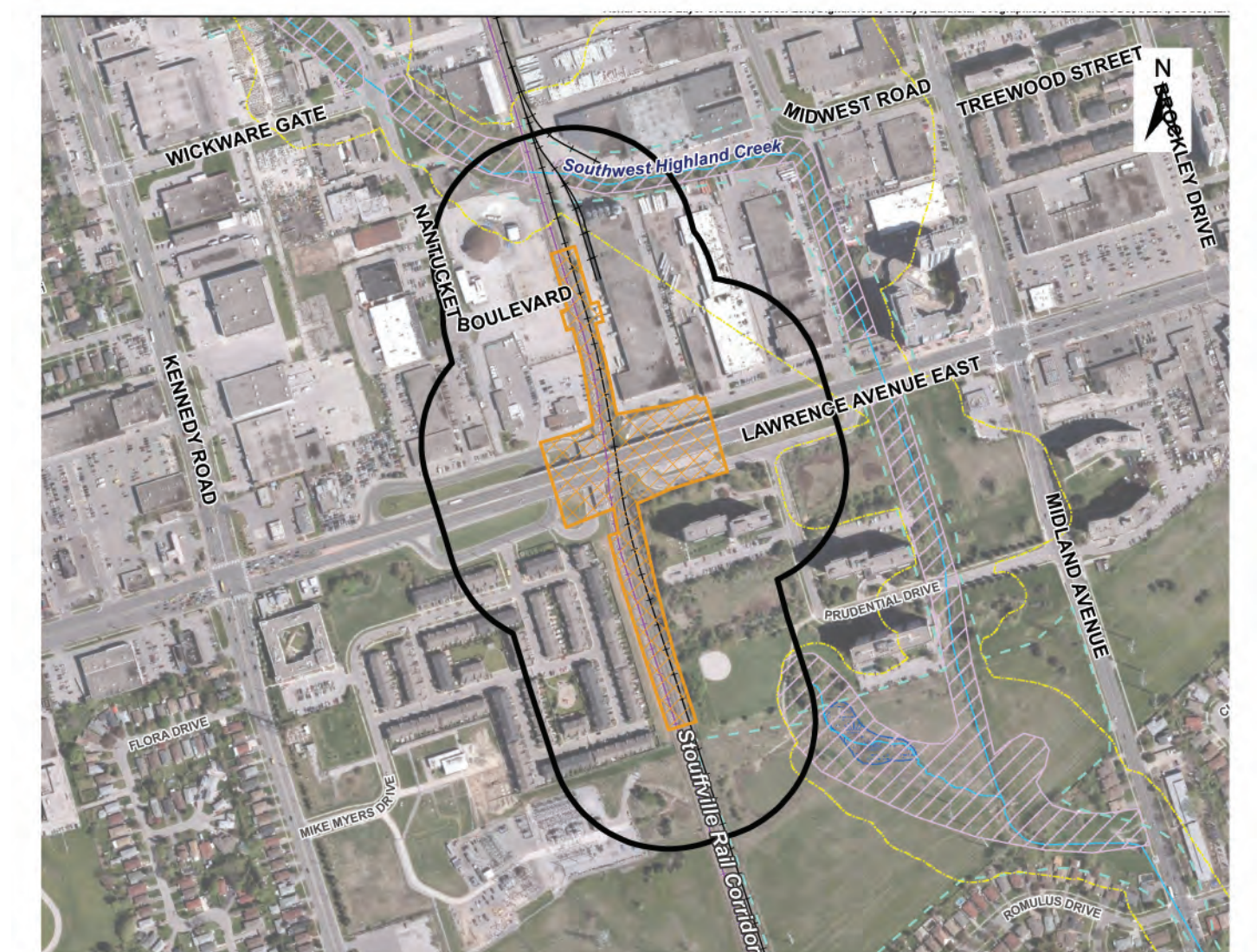
NATURAL ENVIRONMENT

Potential Effects

- Potential temporary/indirect effects to Southwest Highland Creek – erosion and downstream transport of sediment, entry of debris, equipment leaks/spills
- Minimal vegetation removal and effects to wildlife – no critical habitats; common, disturbance tolerant species
- Potential disturbance/destruction of nests of migratory birds; limited potential for harm to bird species at risk
- Removal of some trees

Mitigation Measures

- Implement an Erosion and Sediment Control (ESC) Plan
- Schedule construction outside of the overall bird nesting season of April 1 to August 31; where not possible – nest surveys to be completed
- Adhere to relevant provincial standards for clearing and grubbing, site preparation and tree removal
- Compensate in accordance with Metrolinx Vegetation Compensation Protocol
- Meet requirements of Endangered Species Act, 2007
- Control activity to prevent entry to watercourses of petroleum products, debris, or other potential contaminants/deleterious substances (e.g., conduct activities away from watercourses)
- Complete Arborist Report in detailed design
- Implement tree protection barriers



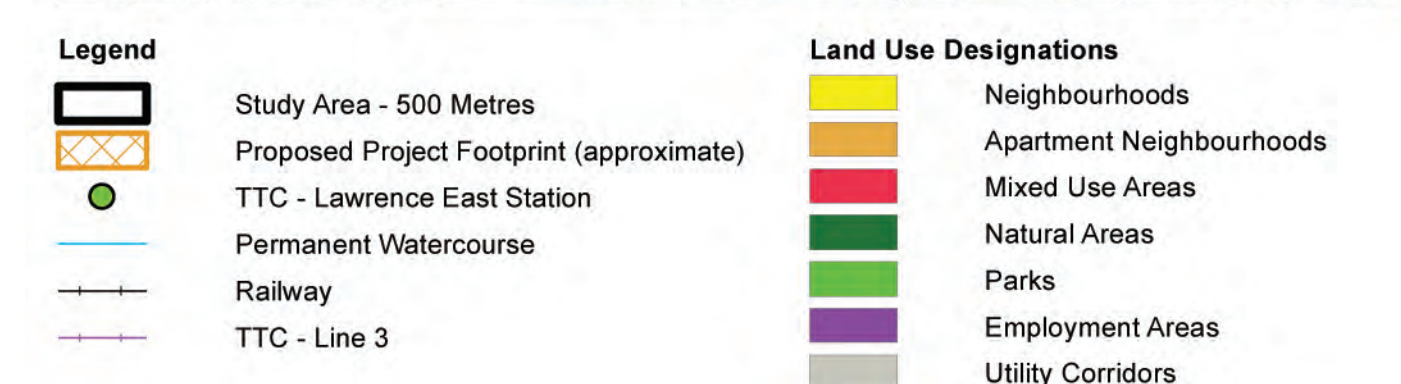
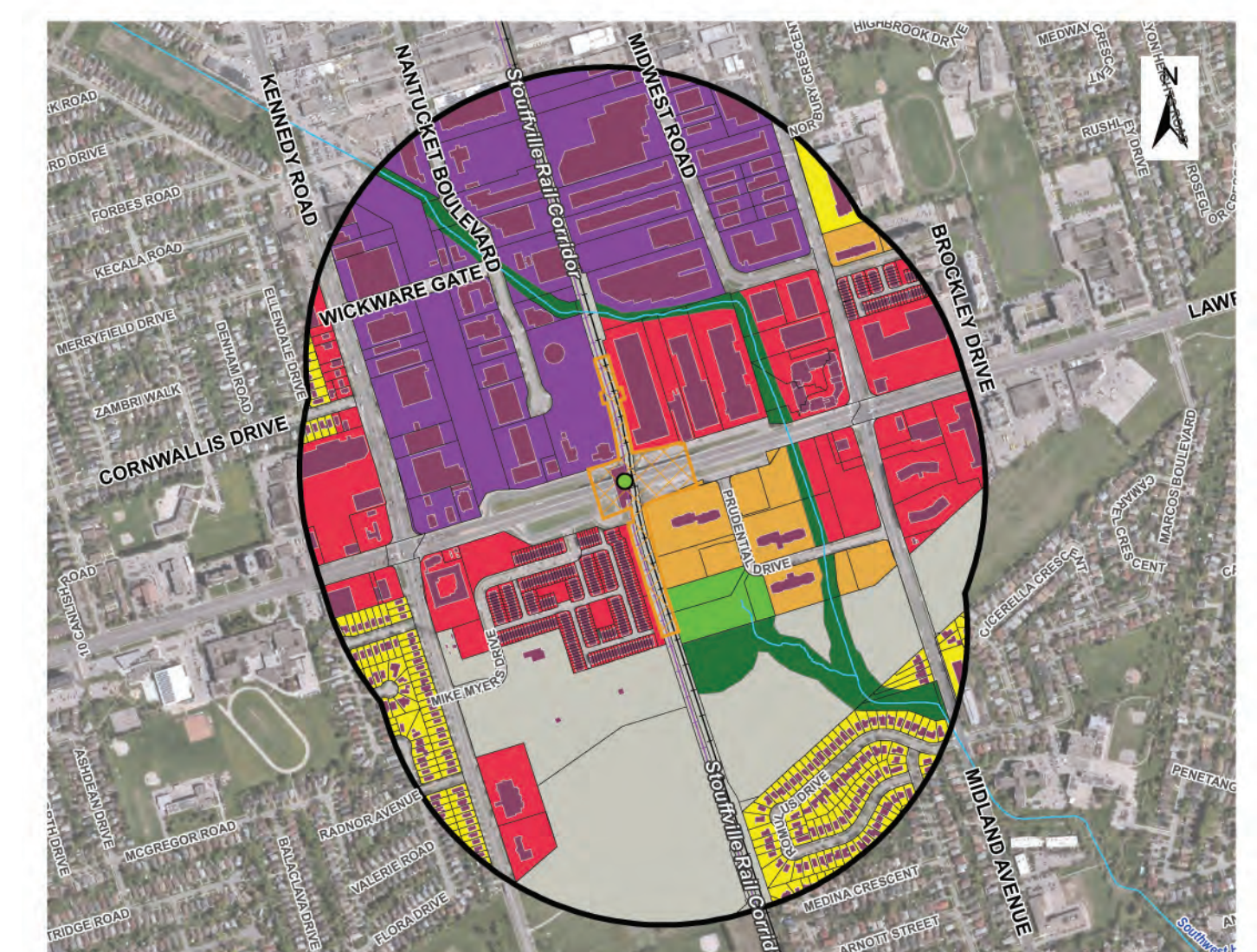
SOCIO-ECONOMIC AND LAND USE

Potential Effects

- Improved multi-modal connectivity and public realm
- Temporary road/lane closures and access restrictions during construction; delays for traffic, pedestrians and cyclists
- Temporary use of/access to adjacent lands during construction
- Temporary visual effects resulting from construction activities (e.g., stockpiling, storage/laydown sites)
- Property requirements
- Temporary nuisance effects during construction (e.g., air quality, noise and vibration)

Mitigation Measures

- Provide alternative access and signage
- Notify property owners and local residents about construction activities
- Confirm potential access/easement and property requirements and consult with property owners
- Develop and implement the following plans: Construction Traffic Control and Management Plan, Air Quality Management Plan, Noise and Vibration Control Plan, Vegetation Compensation Protocol
- Visual screening of construction site to extent possible
- Develop aesthetically pleasing design in conjunction with City and Metrolinx Design Review Panel
- Crime Prevention Through Environmental Design (CPTED) principles will be applied to minimize areas with reduced visibility



ARCHAEOLOGY AND CULTURAL HERITAGE

Potential Effects

- Potential for recovery of pre-contact and contact period archaeological resources based on the proximity to Highland Creek and historic transportation routes
- No properties in the study area with identified cultural heritage value or interest

Mitigation Measures

- Conduct Stage 2 Archaeological Assessment (AA) per recommendations of Stage 1 AA prior to construction

