



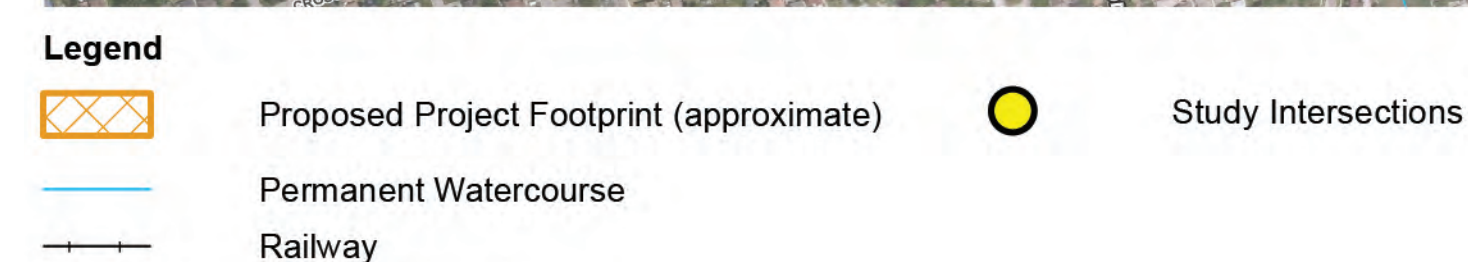
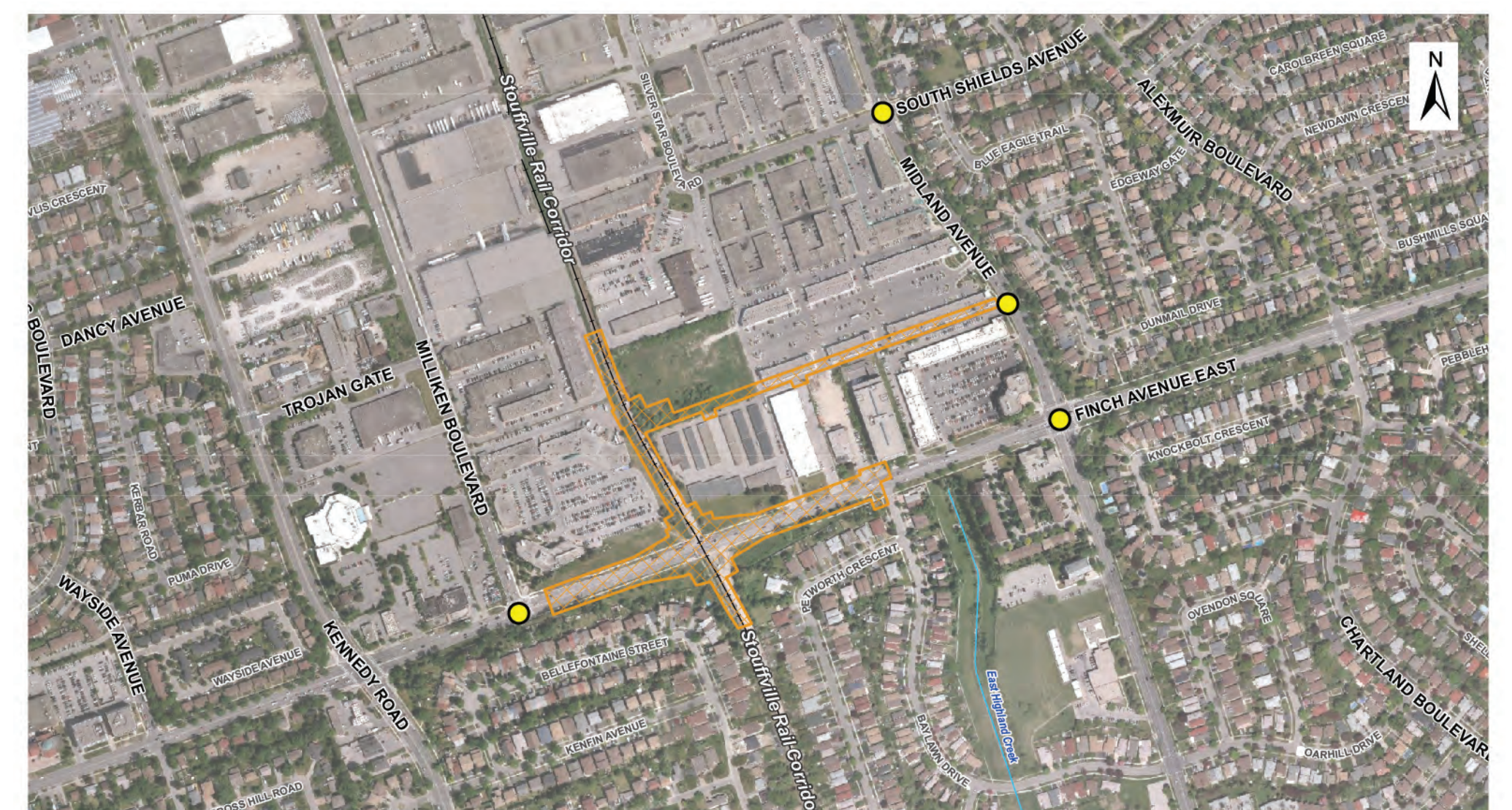
FINCH-KENNEDY STATION

Highlights of Environmental Studies.

TRANSPORTATION

- A Transportation Brief is currently under review by the City and Metrolinx.
- Preliminary findings:
 - No full Transportation and Traffic Impact Assessment required.
 - Less than 100 peak-hour, peak-direction auto trips.*
 - No delays from train crossings owing to rail-road grade separation incorporated in station design.

* This is generally the City of Toronto threshold for determining whether a full assessment is required.



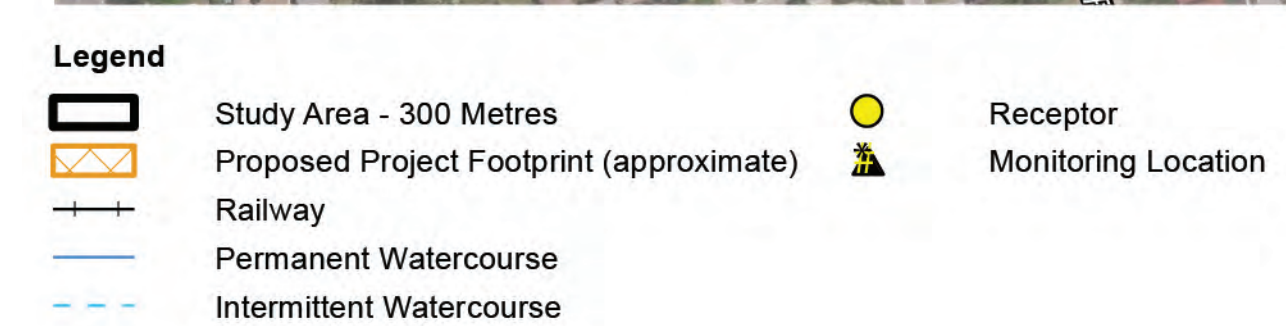
NOISE AND VIBRATION

Potential Effects

- Nighttime construction sound levels may exceed Federal Transit Administration (FTA) criterion at nearby residences
- Presence of station is not expected to affect sound levels (assessment is underway)
- Some commercial structures to the north of Finch Avenue East may experience vibration during construction
- Vibration levels are expected to decrease during operation for all assessed receptors.

Mitigation Measures

- A Noise and Vibration Control Plan will be developed prior to construction
- A more detailed assessment of potential noise and vibration impacts will be developed as part of detailed design
- Construction to be planned to minimize the number of nights where noisy nighttime construction activities may be required
- Keep construction equipment in good repair.



AIR QUALITY

Concentrations of selected contaminants are estimated to be below provincial and federal air quality thresholds at nearby residences.

Potential Effects

- Emissions from passenger vehicles using the access road and buses using bus lanes during operation
- Emissions from engines of construction equipment, dust emissions from stockpiles, loading/unloading activities and transportation of soils during construction.

Mitigation Measures

- An Air Quality Management Plan will be developed and implemented to address items such as use of dust suppressant measures during construction (e.g., covering dump trucks, minimizing loading/unloading of soils and washing of construction equipment and vehicles)
- Provide signage to discourage idling in access road area
- A more detailed assessment of potential air quality impacts will be developed as part of detailed design.