



EAST HARBOUR STATION

Highlights of Environmental Studies

NATURAL ENVIRONMENT

Potential Effects

- Potential temporary/indirect effects to the Don River – erosion and downstream transport of sediment, entry of debris, equipment leaks/spills
- Minimal vegetation removal and effects to wildlife
- Potential disturbance/destruction of nests of migratory birds
- Limited potential to affect bird, plant and aquatic species at risk
- Removal of some trees will be required.

Mitigation Measures

- No in-water work or work below the high-water mark
- Implement an Erosion and Sediment Control (ESC) Plan
- Schedule construction outside of the overall bird nesting season of April 1 to August 31; where not possible – nest surveys to be completed
- Adhere to relevant provincial standards for clearing and grubbing, site preparation and tree removal
- Compensate in accordance with Metrolinx Vegetation Compensation Protocol
- Meet requirements of Endangered Species Act, 2007
- Control activity to prevent entry to watercourses of petroleum products, debris, or other potential contaminants/deleterious substances (e.g., conduct activities away from watercourses)
- Complete Arborist Report in detailed design
- Implement tree protection barriers.



Legend
 Study Area - 120 metres
 Project Footprint (approximate)
 Permanent Watercourse
 Railway
 Flow Direction
 TRCA Regulation Limit
 Natural Heritage System
 Ravine and Natural Feature Protection Bylaw
 Cultural Vegetation Community

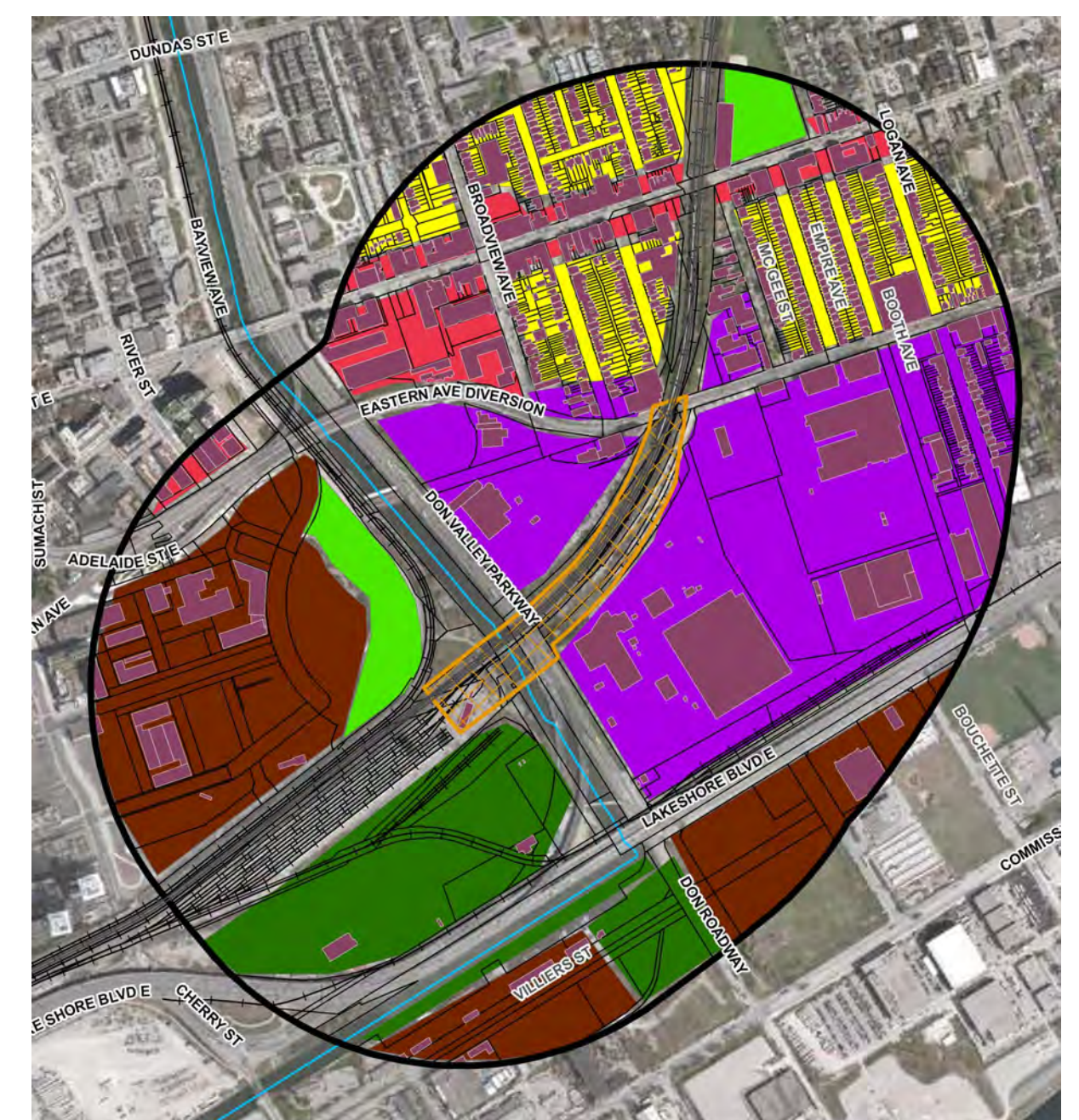
SOCIO-ECONOMIC AND LAND USE

Potential Effects

- Improved multi-modal connectivity and public realm
- Temporary road/lane closures and access restrictions during construction; delays for traffic, pedestrians and cyclists
- Temporary use of/access to adjacent lands during construction
- Temporary visual effects resulting from construction activities (e.g., stockpiling, storage/laydown sites)
- Property requirements
- Temporary nuisance effects during construction (e.g., air quality, noise and vibration).

Mitigation Measures

- Provide alternative access and signage
- Notify property owners and local residents about construction activities
- Confirm potential access/easement and property requirements and consult with property owners
- Develop and implement the following plans: Construction Traffic Control and Management Plan, Air Quality Management Plan, Noise and Vibration Control Plan, Vegetation Compensation Protocol
- Visual screening of construction site to extent possible
- Develop aesthetically pleasing design in conjunction with City and Metrolinx Design Review Panel
- Crime Prevention Through Environmental Design (CPTED) principles will be applied to minimize areas with reduced visibility.



Legend
 Study Area - 500 Metres
 Proposed Project Footprint (approximate)
 Permanent Watercourse
 Railway
Land Use Designations
 Neighbourhoods
 Regeneration Areas
 Mixed Use Areas
 Parks
 Employment Areas
 Natural Areas

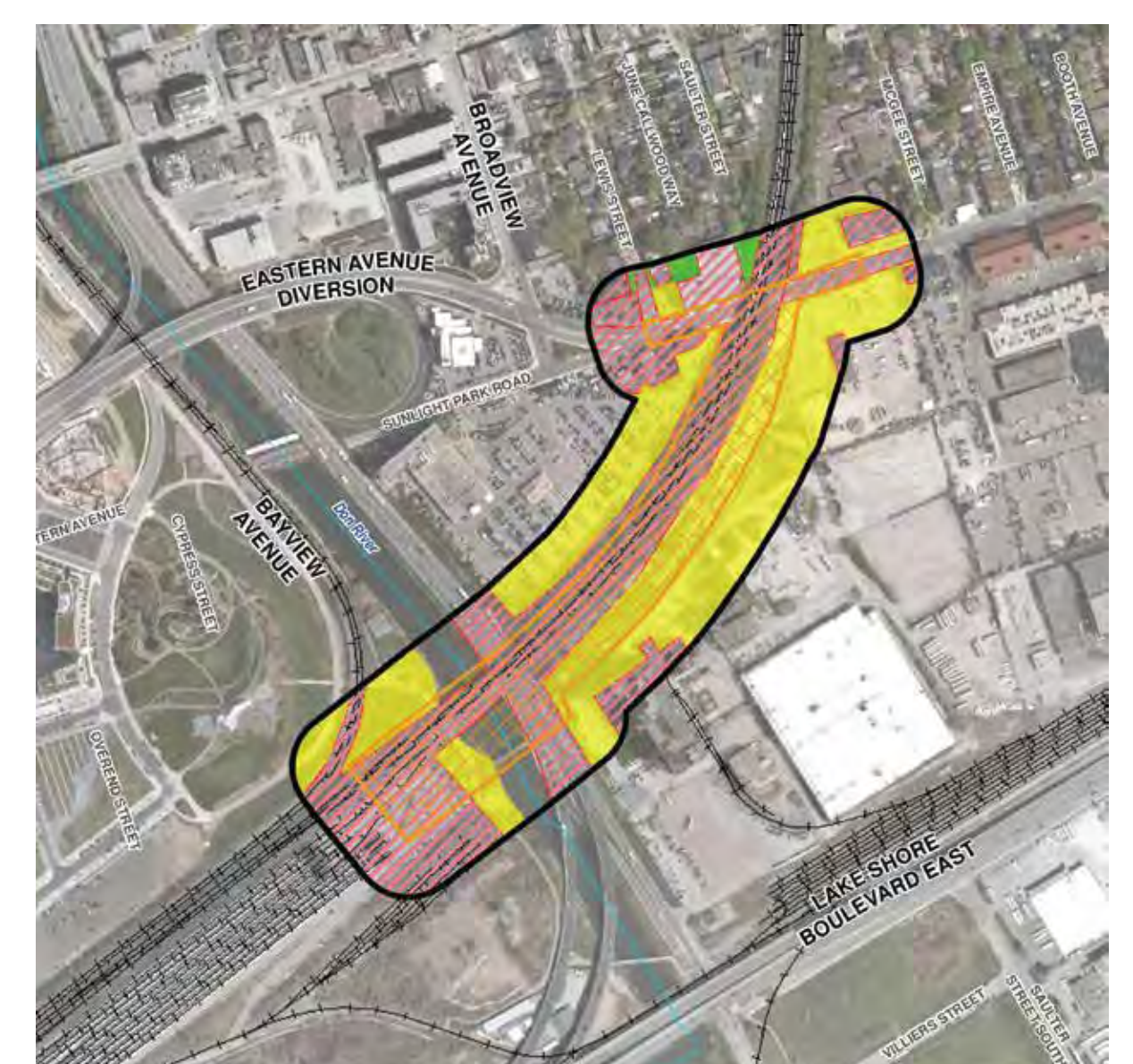
ARCHAEOLOGY AND CULTURAL HERITAGE

Potential Effects

- Potential for recovery of pre-contact and contact period archaeological resources based on the proximity to the Don River, Lake Ontario and historic transportation routes
- No properties in the study area with identified cultural heritage value or interest.

Mitigation Measures

- Conduct Stage 2 Archaeological Assessment (AA) per recommendations of Stage 1 AA prior to construction.



Legend
 Study
 Proposed Project Footprint (approximate)
 Permanent Watercourse
 Railway
 Disturbed
 Stage 2 Required: Test Pit Survey
 Stage 2 Required: Deeply Buried Potential